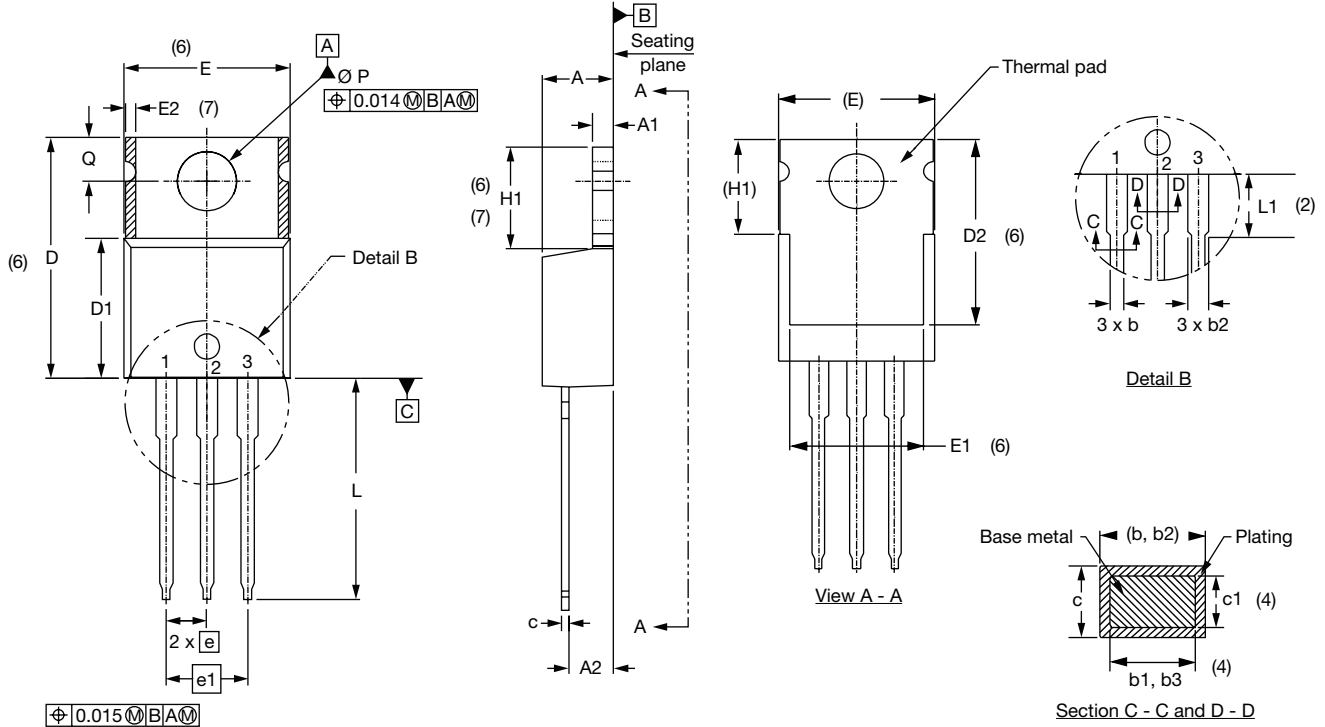


## TO-220AB, TO-220AB FULL-PAK

### DIMENSIONS FOR TO-220AB in millimeters and inches



SYMBOL	MILLIMETERS		INCHES		NOTES
	MIN.	MAX.	MIN.	MAX.	
A	3.56	4.83	0.140	0.190	
A1	0.51	1.40	0.020	0.055	
A2	2.03	2.92	0.080	0.115	
b	0.38	1.01	0.015	0.040	
b1	0.38	0.97	0.015	0.038	4
b2	1.14	1.78	0.045	0.070	
b3	1.14	1.73	0.045	0.068	4
c	0.36	0.61	0.014	0.024	
c1	0.36	0.56	0.014	0.022	4
D	14.22	16.51	0.560	0.650	3
D1	8.38	9.02	0.330	0.355	

SYMBOL	MILLIMETERS		INCHES		NOTES
	MIN.	MAX.	MIN.	MAX.	
D2	11.68	12.88	0.460	0.507	6
E	9.65	10.67	0.380	0.420	3, 6
E1	6.86	8.89	0.270	0.350	6
E2	-	0.76	-	0.030	7
e	2.54 BSC		0.100 BSC		
e1	5.08 BSC		0.200 BSC		
H1	5.84	6.86	0.230	0.270	6, 7
L	12.70	14.73	0.500	0.580	
L1	3.55	3.96	0.140	0.150	2
Ø P	3.54	4.08	0.139	0.161	
Q	2.54	3.42	0.100	0.135	

#### Notes

- (1) Dimensioning and tolerancing as per ASME Y14.5M-1994
- (2) Lead dimension and finish uncontrolled in L1
- (3) Dimension D, D1 and E do not include mold flash. Mold flash shall not exceed 0.127 mm (0.005") per side. These dimensions are measured at the outermost extremes of the plastic body
- (4) Dimension b1, b3 and c1 apply to base metal only
- (5) Controlling dimensions: inches
- (6) Thermal pad contour optional within dimensions E, H1, D2 and E1
- (7) Dimensions E2 x H1 define a zone where stamping and singulation irregularities are allowed
- (8) Outline conforms to JEDEC TO-220, except A2 (maximum) and D2 (minimum) where dimensions are derived from the actual package outline

# Outline Dimensions

Vishay High Power Products

TO-220AB,  
TO-220AB FULL-PAK



## DIMENSIONS FOR TO-220AB FULL-PAK in millimeters

